

Growth in Gator Nation: Elementary Rezoning

2026-2027

What To Expect

School Rezoning

- Students who live in the Texas City/Lago Mar areas will attend the new **Ruth Laird Elementary**
- This transition is the result of thoughtful, long-range planning
- No families are losing access to elementary schools
- Students will continue learning in strong neighborhood campuses
- The timing allows for a calm, well-supported transition

Principal: Jennifer Heard



RUTH E. LAIRD ELEMENTARY SCHOOL

Welcome to Ruth E. Laird

Welcome!

Jennifer Heard- Principal

- 30 years of experience in education
- PK- 12th Grade
- 5 years as an administrator



Laird Elementary



- PK- 5 Campus
- 150,000 feet of learning space
- Split level plan
- Capacity to hold around 1000 students.
- There are classrooms as well as community learning PODs.
- Golf Cart Drop Off and Pick-Up

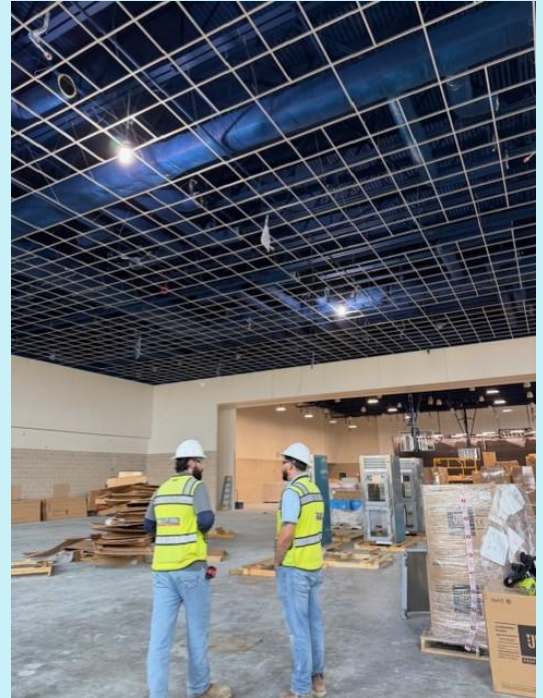
RLES Library



PODS and Classroom Spaces



Collaborative Spaces



FAQ

Will my student continue to receive special education or 504 services?

YES. All campuses in DISD provide support services. The services your student currently receives - special education, 504, GT- will continue at their new campus.

Will transportation be provided?

Bus transportation will be provided to students living in the South Point and Lone Trail subdivisions.

Will transportation be provided?

Transportation Continued

- Students using special needs transportation currently, will continue to receive bus transportation to Ruth Laird Elementary in 2026-2027.
- Shirley Miller is the DISD transportation contact. Specific questions can be directed to our transportation department at 281-229-7300.

Will we need to register for Laird?

You will NOT complete new student registration. Your child's current records will be transferred to the new campus.

You WILL complete the online registration in July/August.

Please be on the lookout for additional information on our campus website.

Will Laird be ready in August?

Currently, Laird is on schedule to open August 2026.

Will there be a STEM program at RLES?

STEM begins in grade 5 for all DISD campuses - Laird, Lobit, Dunbar, Barber.

Will there be a separate golf cart lane?

Golf Cart Lane

Yes, we are planning for a golf cart lane.



Will there be an ECSE program?

ECSE

Currently, the plan for ECSE does NOT include Laird. RLES students will attend Hughes Road Elementary and then transition to Laird for kindergarten. This plan is based on current, projected numbers.

What time will school start/stop?

Laird will have the same school day as all elementary campuses next year, 8:30am - 4:00pm.

Will there be additional events prior to school starting?

Prior to the start of the school year, we will host a “Meet the Teacher” event that will also provide families with an opportunity to visit and explore the building. During this time, parents and students will be able to walk through the campus, locate classrooms, and become familiar with key areas such as the cafeteria, gym, and front office. This event is designed to help students feel comfortable and excited for the first day of school while also giving families a chance to connect with teachers and staff in a welcoming environment.

Will there be events and programs for parents to attend?

Yes, there will be events, programs, and opportunities for parents to be involved throughout the year. As we open this new campus, we are currently in the process of planning meaningful events and building new traditions that will bring our school community together. More information will be shared as plans are finalized, and we look forward to creating engaging experiences for our families.



Laird PTO Interest Form

Let's Have A Great Year!



Sticker Bank

Copy and Paste an Emoji to Add to Your Slides!

